

# CBEx

Handheld Raman



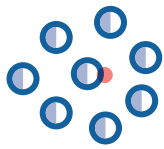
## Palm-Sized Raman Spectrometer

Snowy Range Instruments (SnRI) offers the latest in Raman technology in a convenient handheld device. CBEx provides you with reliable, accurate identification of chemical, polymer, and pharmaceutical substances. Whether pellets, prills, liquids or solids, our unique Orbital Raster Scan (ORS) technology easily analyses mixtures and shaped samples. CBEx's high sensitivity detection system requires very short analysis times while displaying easy to understand results on a highly visible touch screen.

### Features

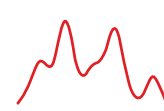
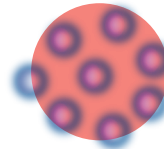
- Orbital Raster Scanning (ORS)
- Ruggedized handheld footprint
- Highly visible OLED touch screen
- Extended operational time using two AA batteries
- High sensitivity using low laser power
- 1064 nm option available

# CBEx Gives you the ORS Advantage



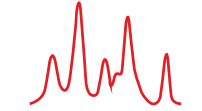
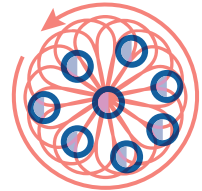
**Small Spot Sampling**  
Small Area = High Resolution

Conventional Raman uses a small spot-size for optimal spectral resolution.



**Large Spot Sampling**  
Large Area = Low Resolution

Increasing the spot-size captures more materials, but lowers the spectral resolution.



**Orbital Raster Scan (ORS)**  
Large Area + High Resolution

ORS maintains the small spot-size, high resolution, and samples more material.



## Product Specifications

Raman Spectral Range	400 to 2300 $\text{cm}^{-1}$
Laser Output Power*	70mW at sample, adjustable
Display	2.8" OLED Resistive Touch Screen
Sampling	ORS
Sampling Method	Vials or Point & Shoot
Size (H x W x D)	3.6" x 2.80" x 1.5"
System weight	11.75 oz.
Power	2 AA Batteries

\* Class 3B Laser Product